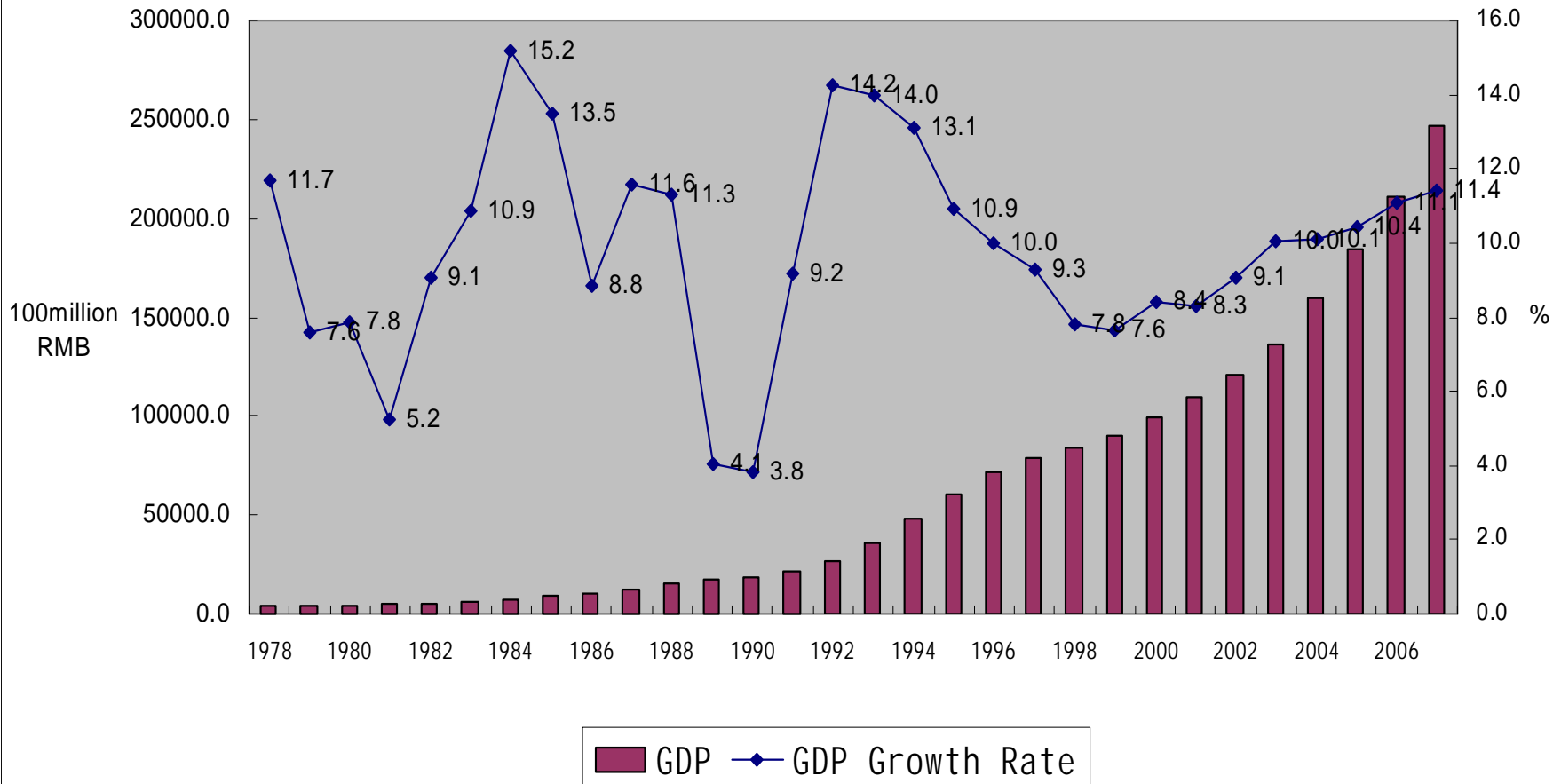
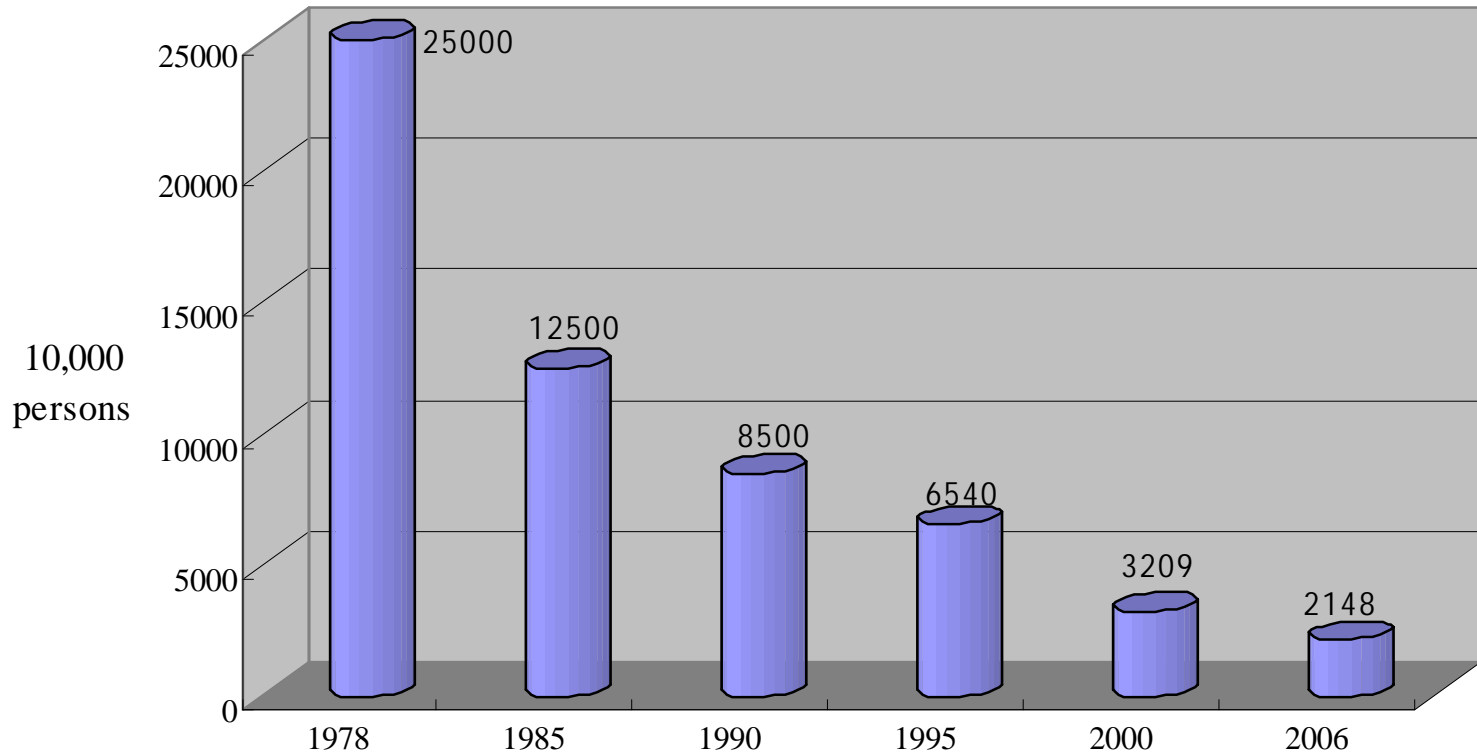


GDP Growth Rate 1978 - 2007

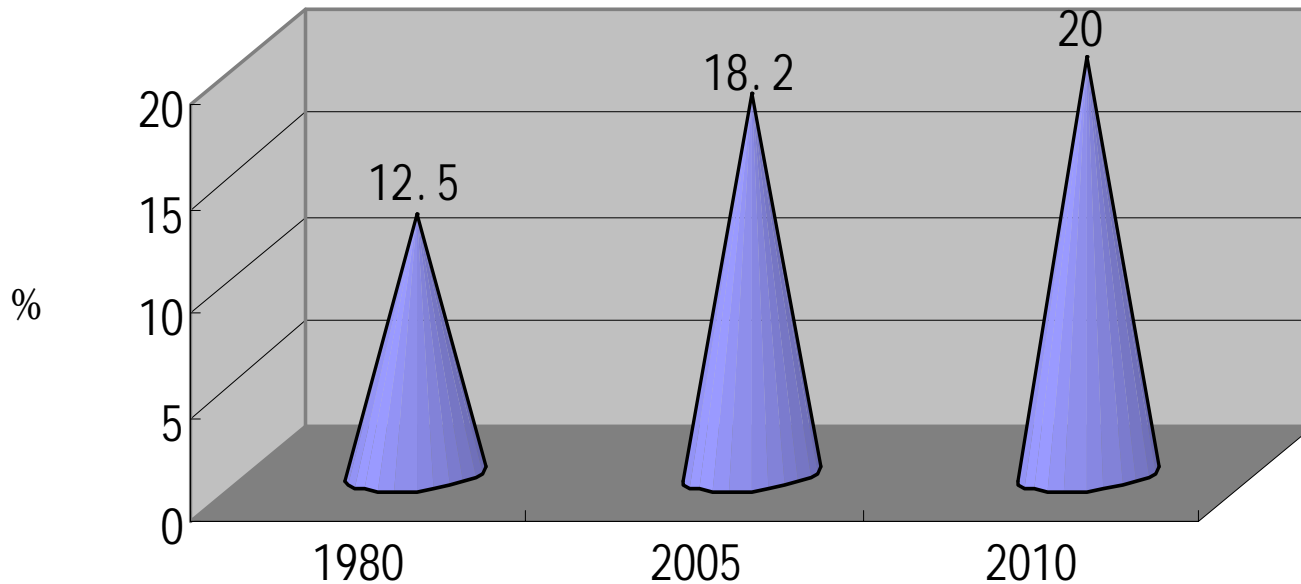


Note : Calculating by the annual growth rate of 8%, China's GDP in 2020 will be 67 trillion RMB.

Poverty Population

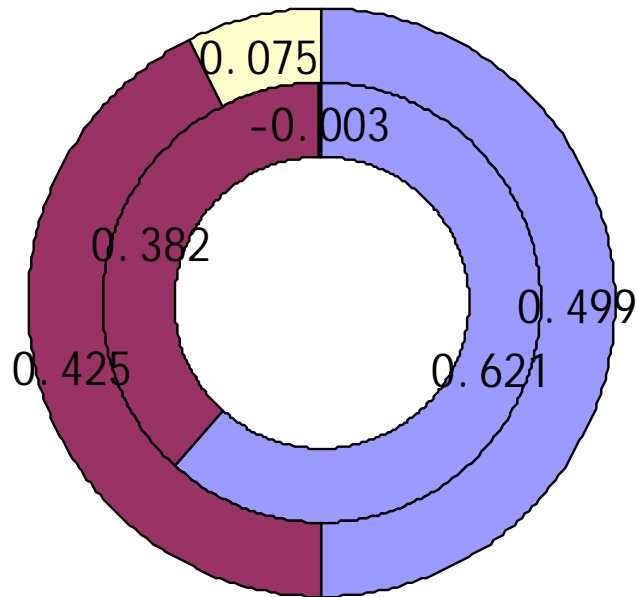


Forest Coverage



- Note: By 2006 , China's forest acreage reached at 174.91 million hectares, and 53.65 million hectares are man-made.

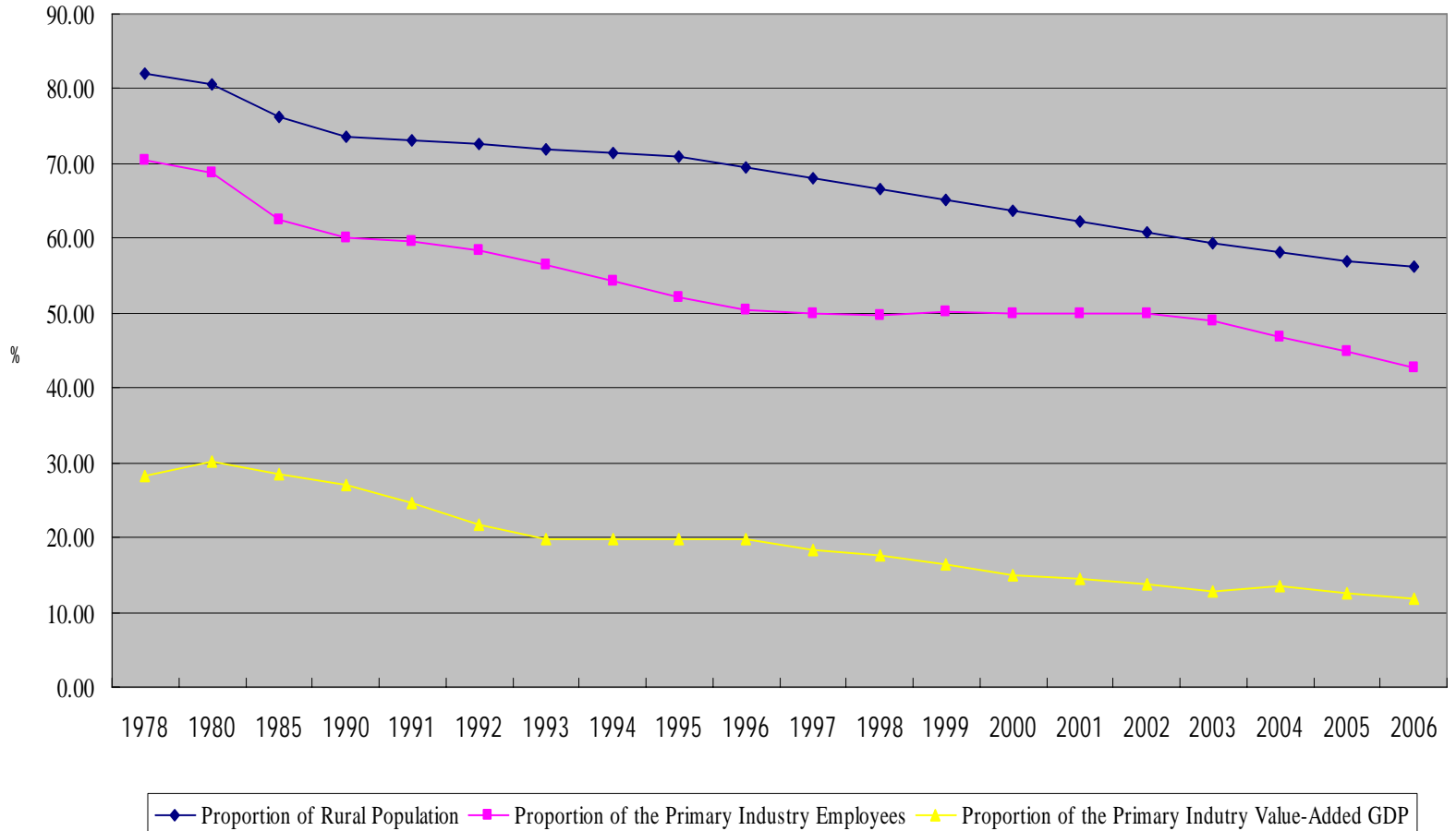
Components of GDP by Expenditure 1978 vs.2006



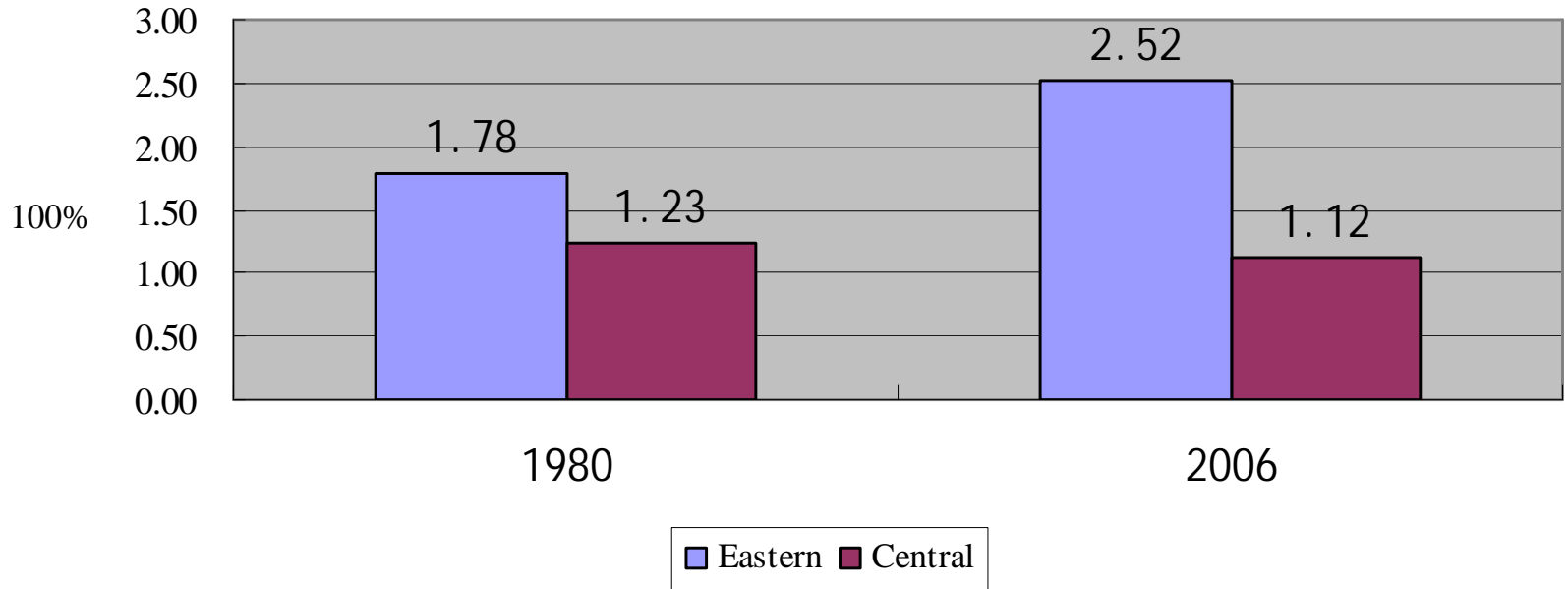
■ Proportion of Final Consumption ■ Proportion of Gross Capital Formation
■ Proportion of Net Exports of Goods and Services

Note : The inner circle indicates 1978, the outer circle indicates 2006.

Agriculture

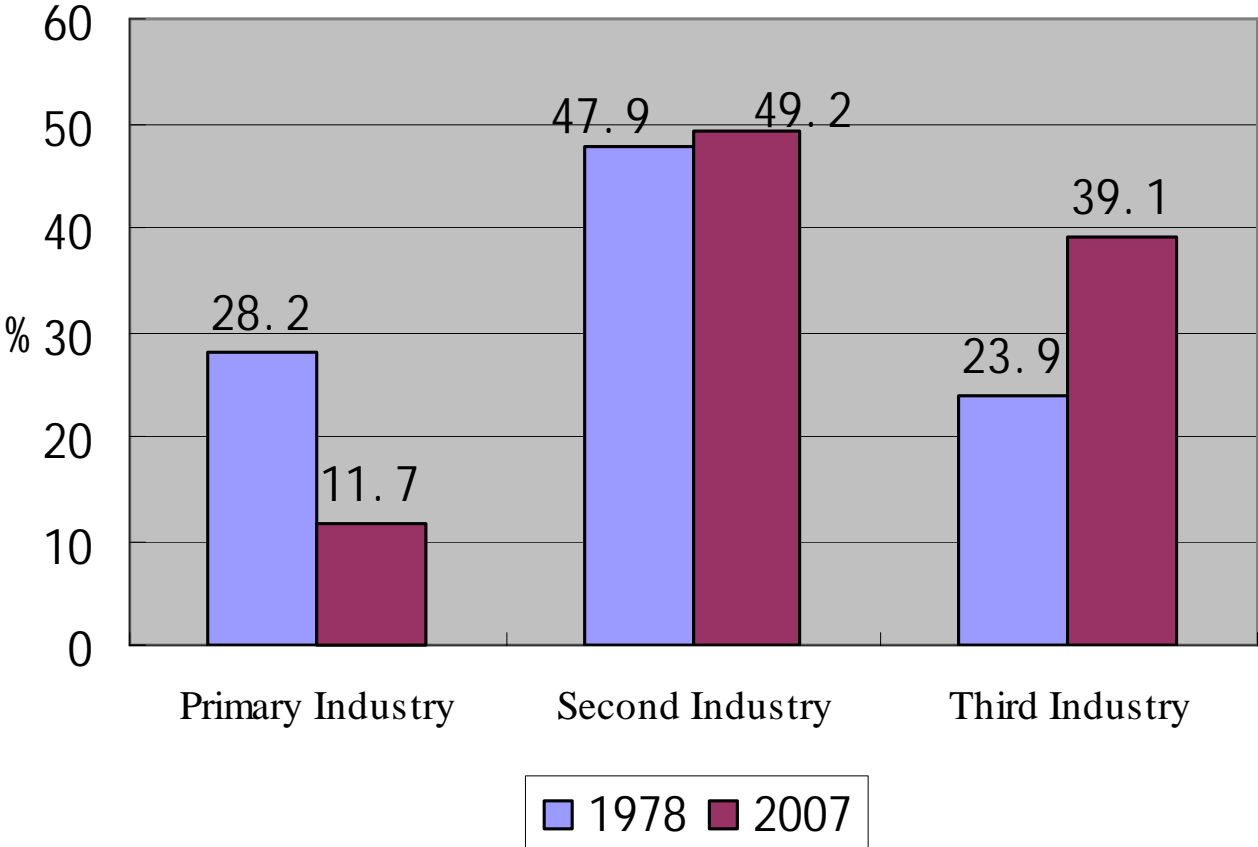


Per Capita GDP of the Eastern and Central Regions as Percentage of the West

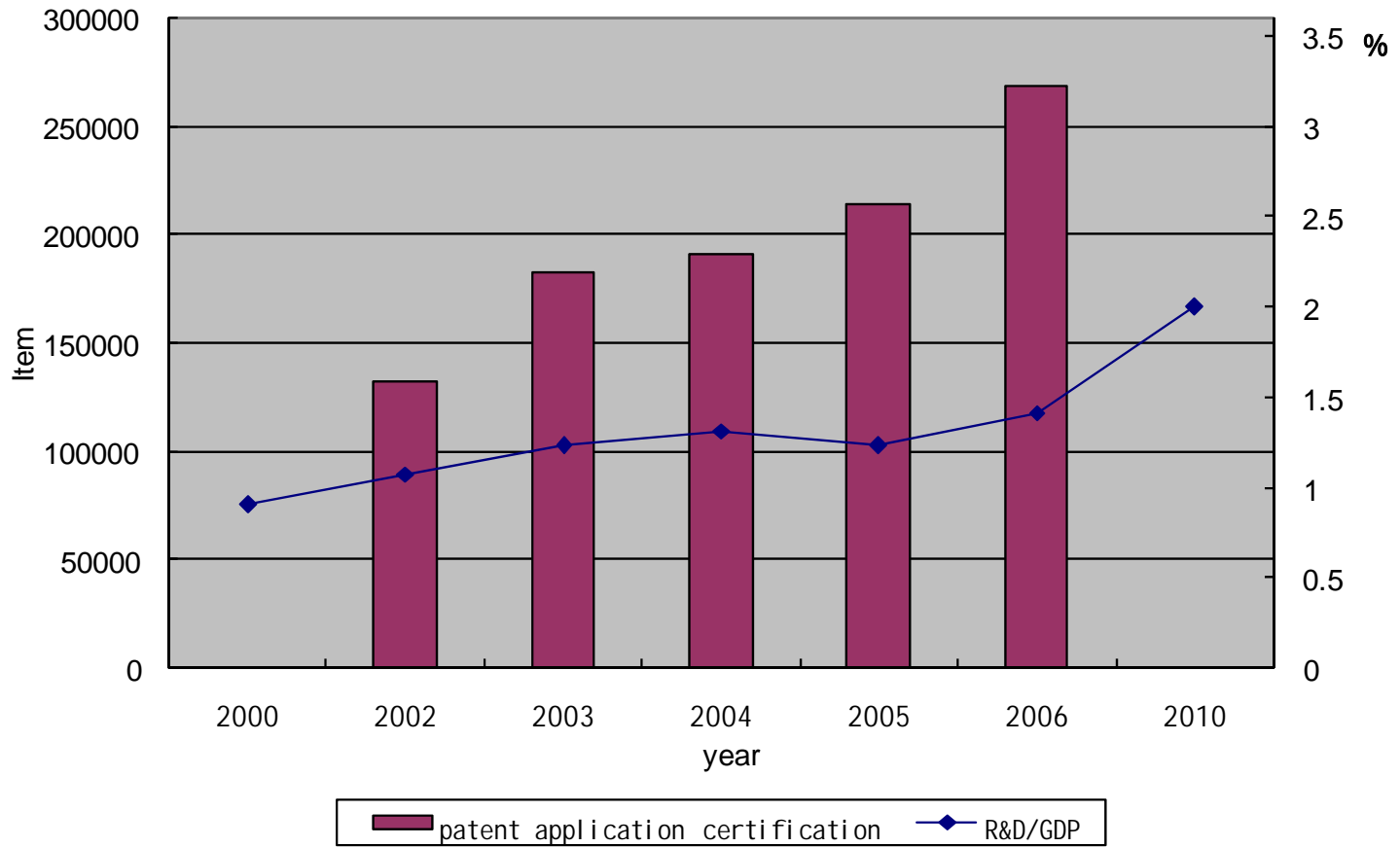


Note : The per capita GDP of the western region in 1980 and 2006 are RMB274.3 and RMB10,959 respectively.

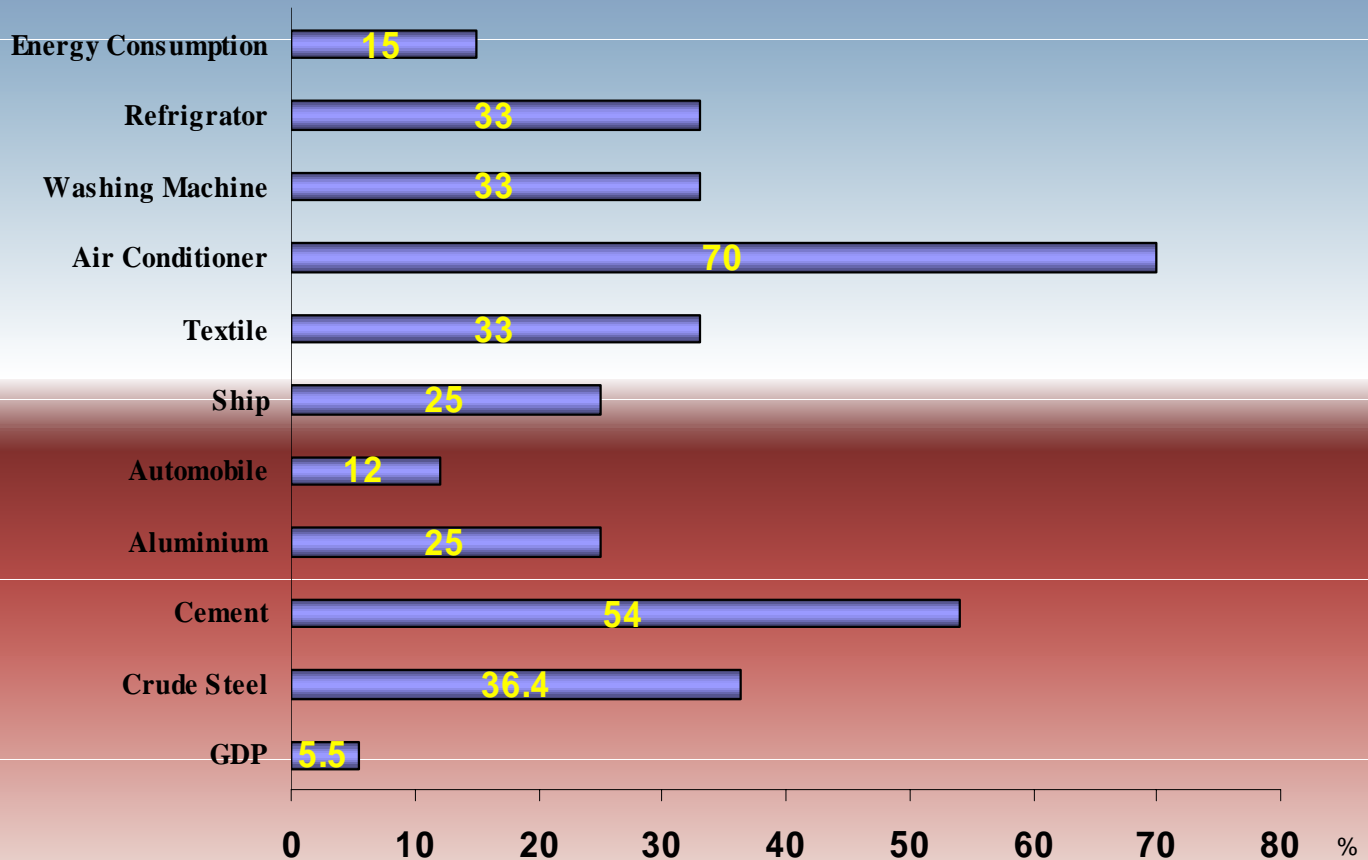
Industrial Structure 1978 & 2007



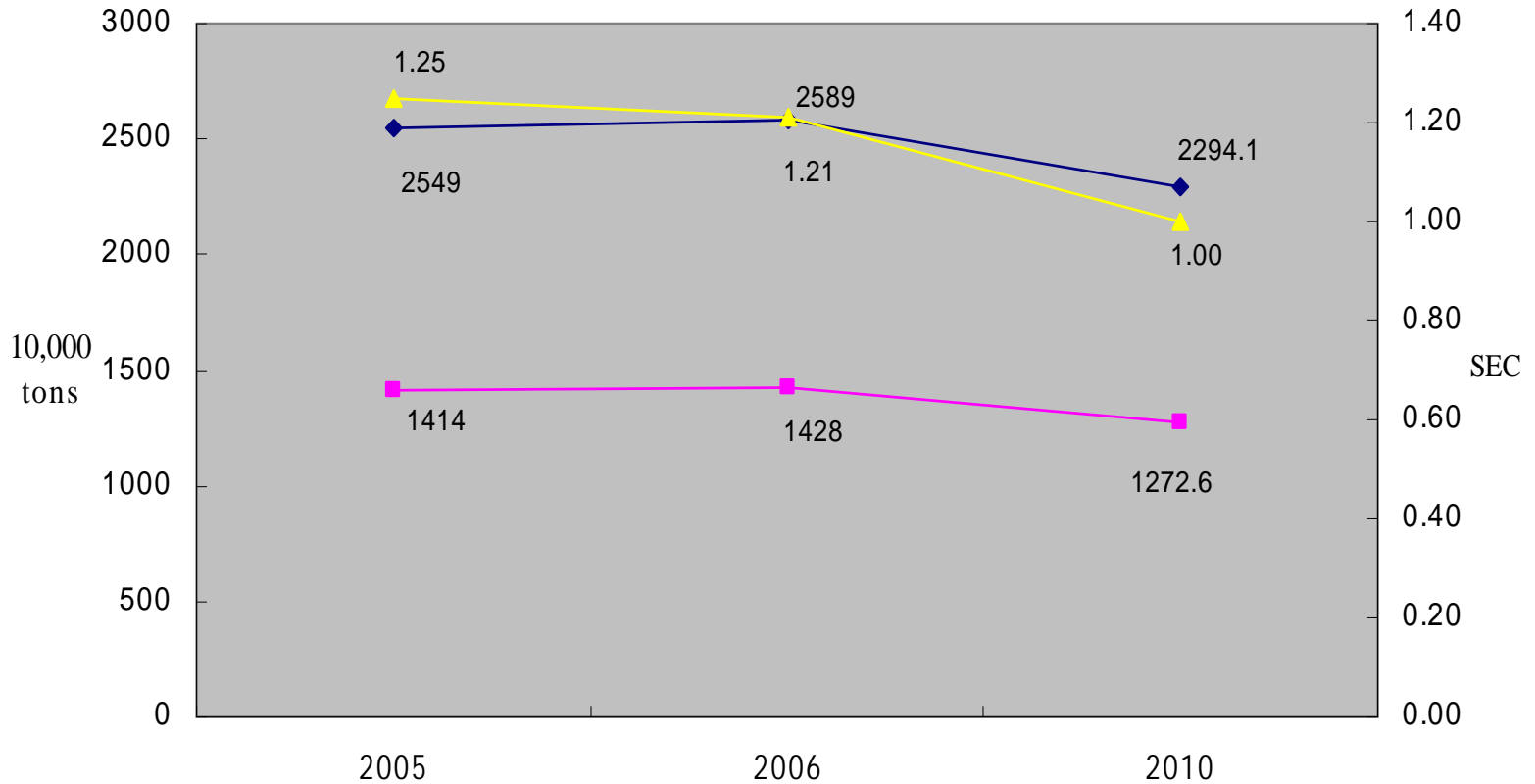
R&D and Patent



Major Industrial Products and Energy Consumption as Percentage of the World



Energy Consumption and Pollution

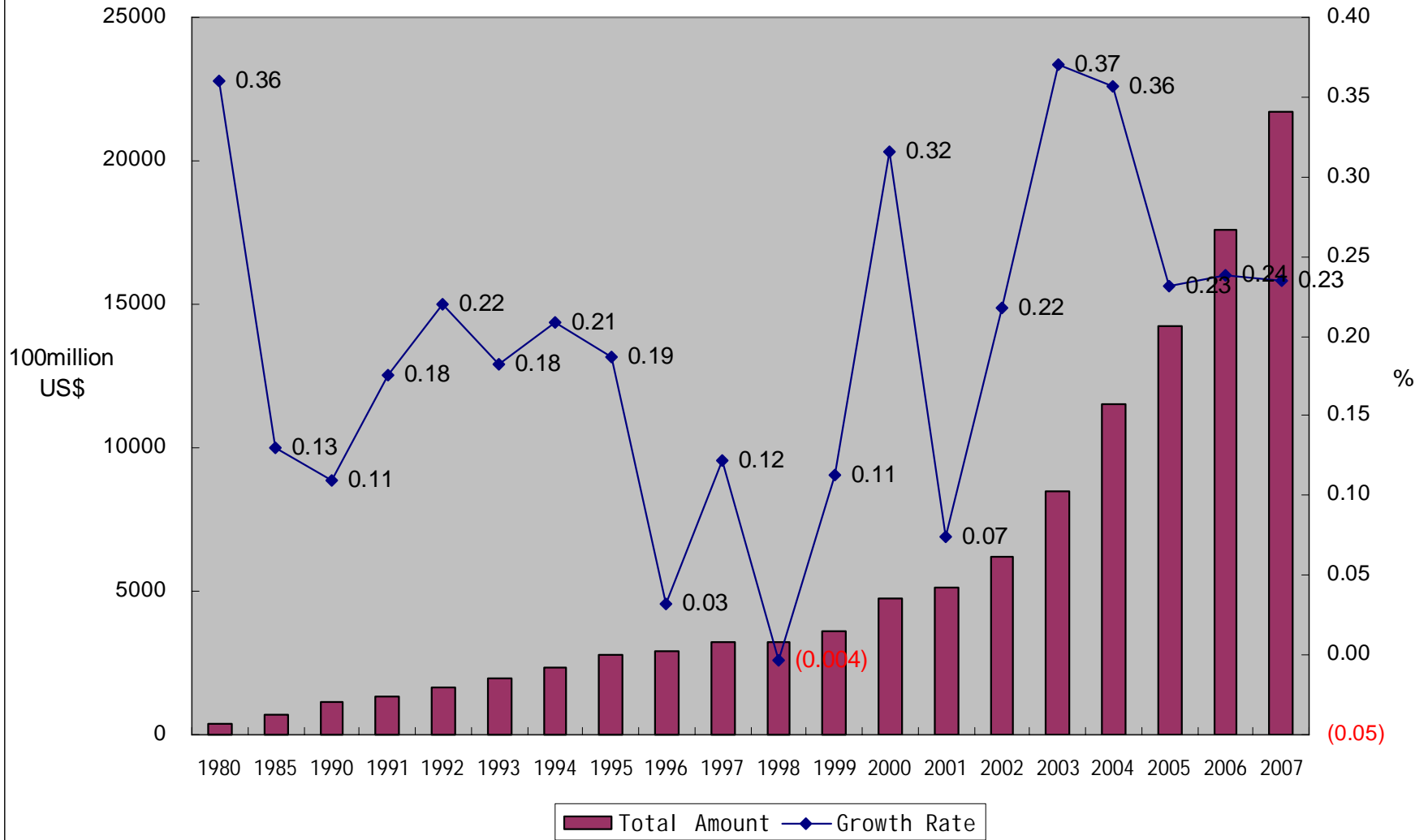


■ Discharge amount of COD (10,000 tons) ◆ Sulphur dioxide emission (10,000 tons)
▲ Energy consumption per unit GDP

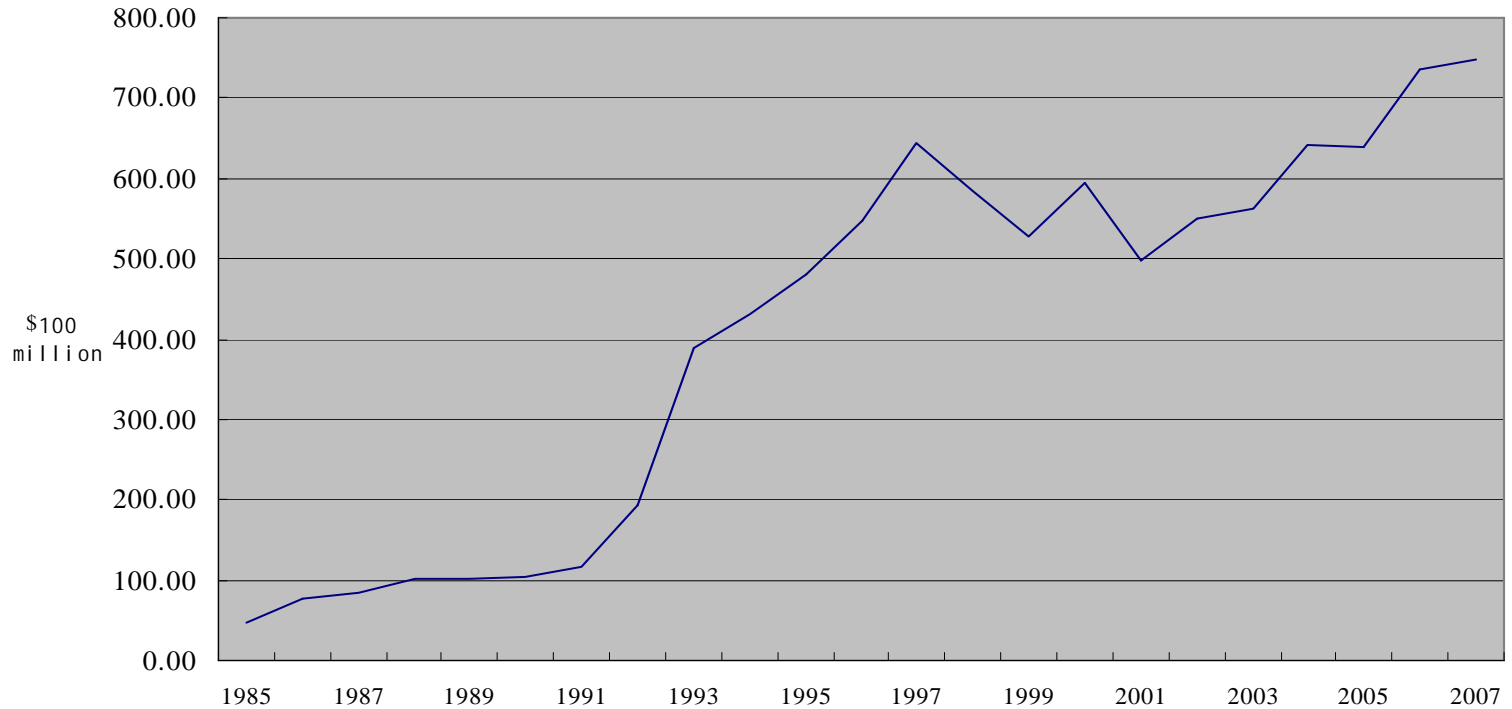
Component of Industrial Production by Ownerships (2006)

	Number of Enterprises	Gross Industrial Output	Total Assets	Revenue from Principle Business	Total Profits	Employees
SOE	0.05	0.10	0.17	0.10	0.10	0.10
Collective-Owned Enterprises	0.05	0.03	0.02	0.03	0.03	0.04
Limited Liability Corporation	0.16	0.22	0.29	0.23	0.28	0.23
Share-holding Corporation Limited	0.02	0.11	0.11	0.11	0.14	0.06
Private Enterprises	0.50	0.21	0.14	0.21	0.16	0.27
Enterprises with Funds from HK,Macao and TW	0.10	0.11	0.09	0.11	0.09	0.14
Foreign Funded Enterprises	0.10	0.21	0.17	0.21	0.18	0.15

Import and Export: Total Amount and Growth Rate 1980-2007

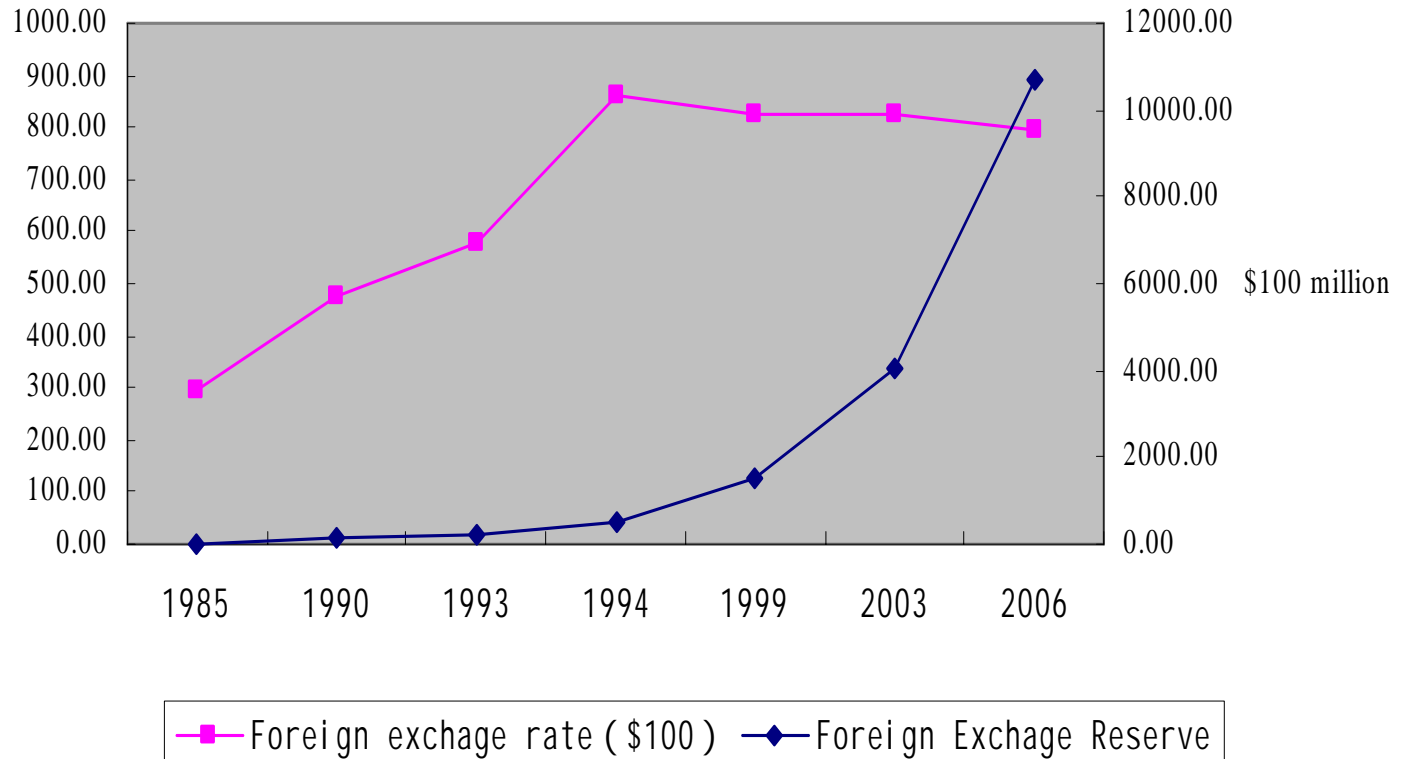


Foreign Capital Actually Utilized

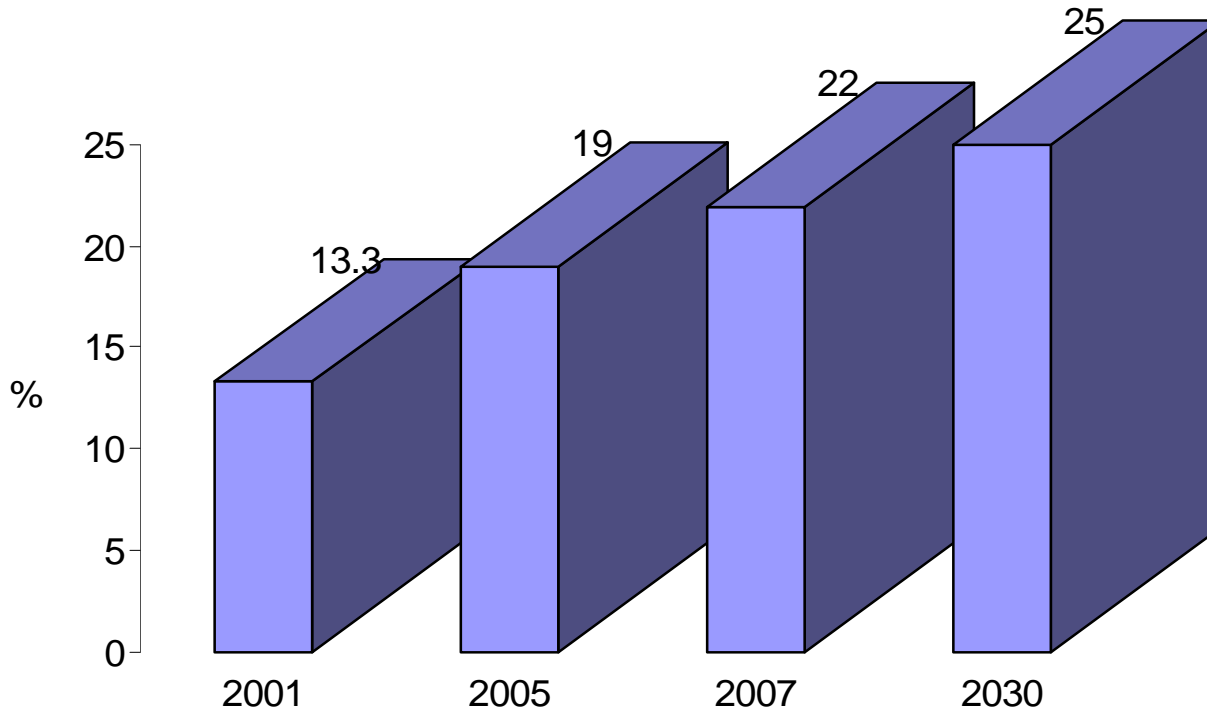


- Note : In 2007, the export of the foreign funded enterprises accounted 57% of the total export , and the employees accounted for 1%.

Foreign Exchange Rate and Reserve

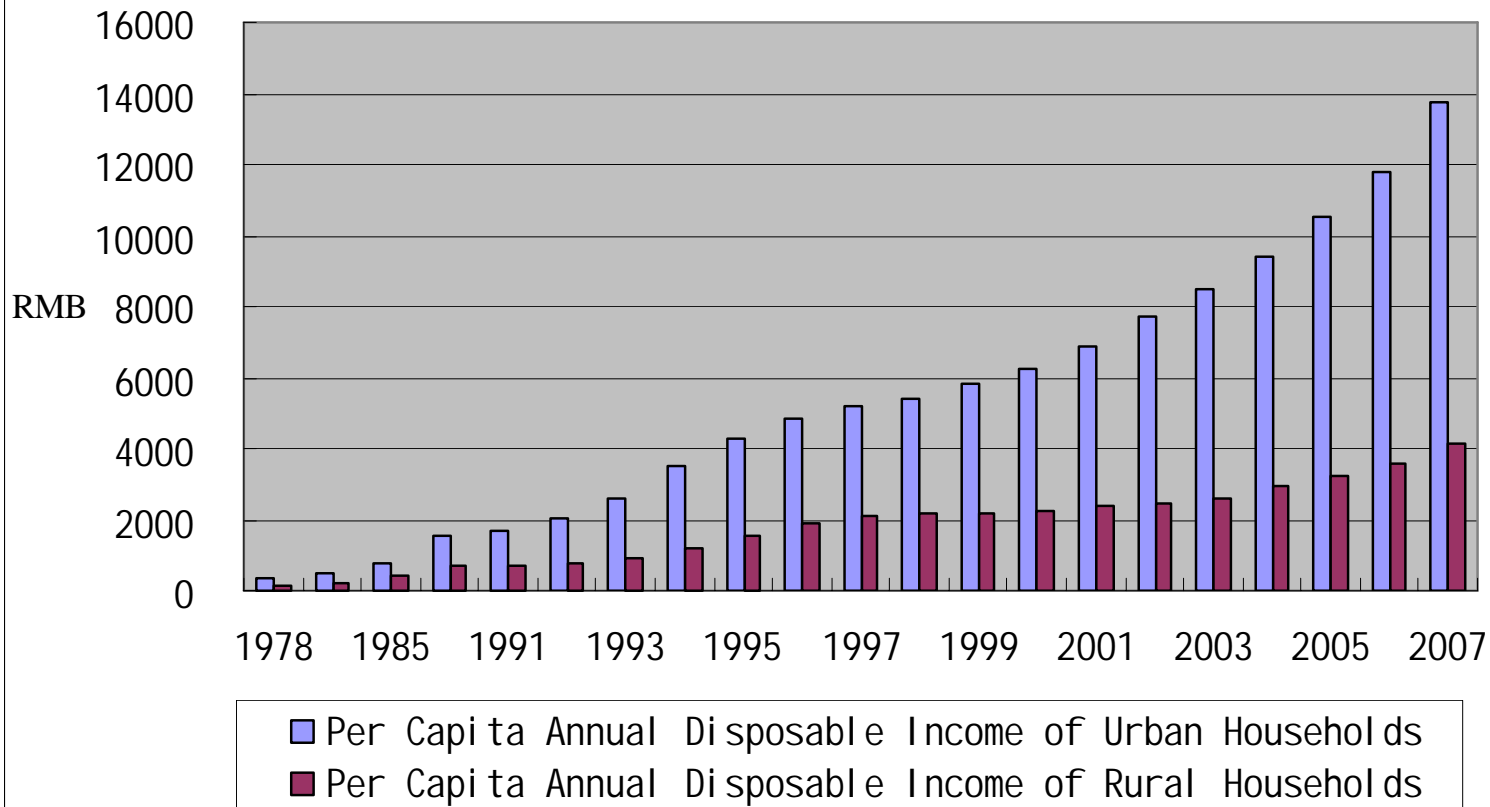


Gross Enrollment Rate of Higher Education

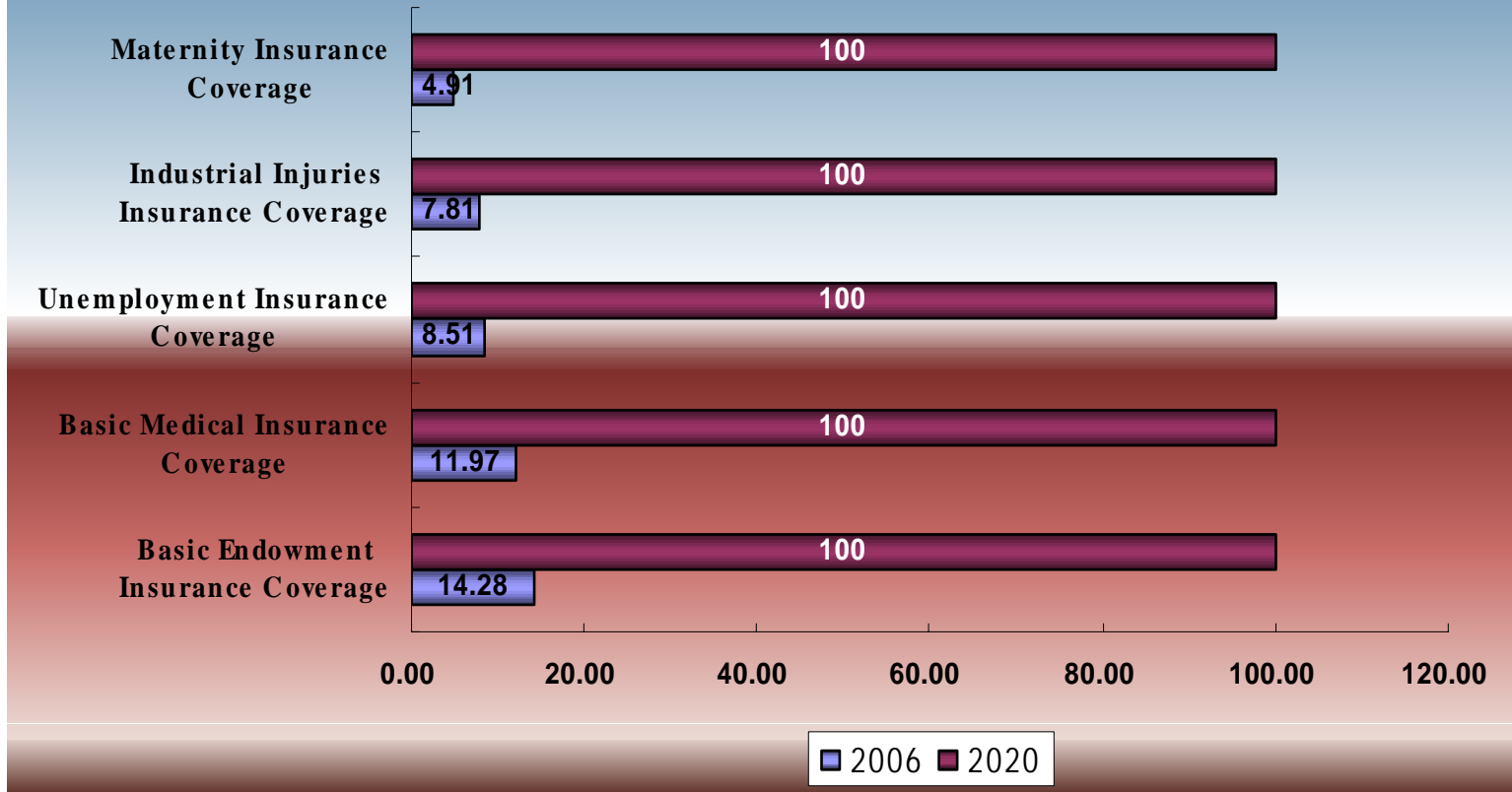


- Note : The number of student enrollment of higher education in 2007 is 25 million. The compulsory education coverage rose from 65% in 1990 to nearly 100% nowadays.

Annual Income of Urban and Rural Households 1978-2007



Social Security Coverage



Note : By 2006, the number of persons joining the basic endowment insurance, the basic medical insurance, the unemployment insurance, the industrial injuries insurance and the maternity insurance are 187.66 million, 157.32 million, 111.87 million, 102.68 million and 64.59 million respectively.

Foreign Trade with Australia 2006

	Trade (\$10,000)	Percentage	Export (\$10,000)	Percentage	Import (\$10,000)	Percentage
Asia	98109410	55.7%	45572692	47%	52536718	66.4%
Australia	3294818	1.9%	1362488	1.4%	1932330	2.4%